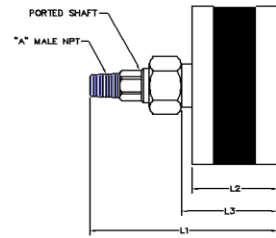
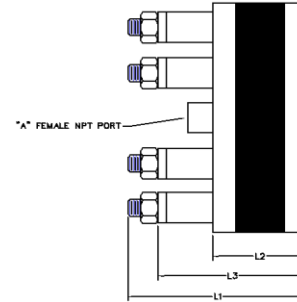


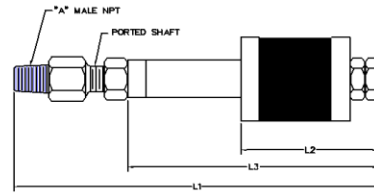
Bolt Type Test Plug - Technical Specifications



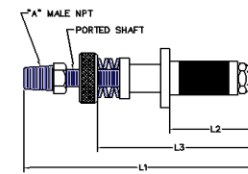
2.17 – 8.50



8.51 – 10.50



.500 – 2.169



.280 – .499

Tube ID Range		Shaft OD		Shaft Quantities	Shaft/Port Diameter		"A" NPT Size	L1		L2		L3		Max. Op. Pressure		Shaft Hex Wrench Size	Hex Nut Wrench Size	Approximate Shipping Weight	
(in)	(mm)	(in)	(mm)		(in)	(mm)		(in)	(mm)	(in)	(mm)	(in)	(mm)	(psi)	(bar)	(in)	(in)	(lbs)	(kgs)
.280 - .499	7.11 - 12.69	1/4-1/8 (STEPED)	6.4 - 3.2	1	0.06	1.5	1/8 M	4 1/4	108.0	1 1/8	28.6	2 3/8	60.3	250	17.2	9/16	Knurled nut	0.30	0.14
.500 - .719	12.70 - 18.27	1/4	6.4	1	0.12	3.0	1/8 M	4 3/8	111.1	1 3/4	44.5	2 3/4	69.9	250	17.2	9/16	7/16	0.25	0.11
.720 - .869	18.28 - 22.08	1/4	6.4	1	0.12	3.0	1/8 M	4 3/8	111.1	1 3/4	44.5	2 3/4	69.9	175	12.0	9/16	7/16	0.25	0.11
.870 - 1.099	22.09 - 27.69	3/8	9.5	1	0.19	4.8	1/8 M	6 3/8	161.9	2 1/16	52.4	4 7/16	112.7	175	12.0	9/16	9/16	0.50	0.23
1.100 - 1.429	27.94 - 36.31	3/8	9.5	1	0.19	4.8	1/8 M	6 3/8	161.9	2 3/16	55.6	4 9/16	115.9	175	12.0	9/16	9/16	0.60	0.27
1.430 - 1.779	36.32 - 45.20	3/8	9.5	1	0.19	4.8	1/8 M	6 3/8	161.9	2 3/16	55.6	4 9/16	115.9	75	5.1	9/16	9/16	0.80	0.36
1.780 - 2.169	45.21 - 55.11	3/8	9.5	1	0.19	4.8	1/8 M	6 3/8	161.9	2 5/16	58.7	4 11/16	119.1	75	5.1	9/16	9/16	1.00	0.45
2.17-3.50	55.12 - 89.14	5/8	15.9	1	0.31	7.9	1/4 M	4 3/8	111.1	1 3/4	44.5	2	50.8	50	3.4	1/2	15/16	2.75	1.25
3.51 - 4.50	89.15 - 114.54	7/8	22.2	1	0.44	11.2	3/8 M	4 5/8	117.5	1 3/4	44.5	2	50.8	40	2.7	11/16	1 5/16	4.50	2.04
4.51-6.50	114.55 - 165.34	1 1/4	31.8	1	0.56	14.2	1/2 M	6 3/4	171.5	3	76.2	3 1/4	82.6	25	1.7	1	1 7/8	13.00	5.89
6.51-8.50	165.35 - 216.14	1 1/2	38.1	1	0.75	19.1	3/4 M	7 3/8	187.3	3 1/2	88.9	3 3/4	95.3	15	1.0	1 1/4	2 1/4	28.50	12.91
8.51-10.50	216.15 - 266.95	5/8	15.9	6	0.75	19.1	3/4 F	6 1/8	155.6	2 1/2	63.5	4 7/8	123.8	10	0.7	n/a	15/16	40.00	18.12



North America / Central & South America
 Corporate Office
 2701 Township Line Rd
 Hatfield, PA 19440-1770 USA
 (P) +1 215.721.1100
 +1 800.355.7044
 (F) +1 215.721.1101
 est-info@curtisswright.com

Europe / Middle East / Africa
 EST Group B.V.
 Hoorn 312a
 2404 HL, Alphen aan den Rijn
 The Netherlands
 (P) +31.172.418841
 (F) +31.172.418849
 est-emea@curtisswright.com

Asia Pacific
 EST Group Asia
 35 Tannery Rd, #11-10 Tannery Block
 Ruby Industrial Complex
 Singapore 347740
 (P) +65.6745.8560
 (F) +65.6742.8700
 est-asia@curtisswright.com